

# KITO EXPLOSION PROOF TYPE ELECTRIC CHAIN HOIST WITH MOTORIZED TROLLEY PARTS LIST

## POINTS TO BE NOTED :

1. Excluding chain, top hook, bottom hook assembly and chain container, the parts for explosion-proof type RES and RESM are shown on this parts list. Parts solely for RES and RESM are marked with an asterisk. Alphabetical letters marked on the same columns of parts indicate interchangeability in each capacity. Unmarked parts are interchangeable with standard ES and MS parts and you should refer to the column of interchangeability with standard parts showing Section-Fig. No. and Part No.
2. RES hoist is designed based on the main body of standard ES 1 t-S and 2 t-S. 7.1mm chain and its related hooks are used for RES 005S and 010S, and other capacities have the same size chains and hooks as standard ones. Therefore in consideration of this fact, you are requested to refer to standard ES parts list if you need to verify chain, top and bottom hook assembly and chain container.

## IMPORTANT

When ordering replacement part, please specify the following points :

1. Voltage.
2. Hoist capacity, hoisting speed (S or L).
3. Model number in name plate.
4. Correct part names and numbers.
5. Lineal length of push button cord, chain lift or power supply cable, when required.

# KITO

Fig. No.	Part Name	Parts Per Hoist	Capacity									Interchangeability with standard parts	
			½-S	1-L	1-S	2-L	1 ½	3	2-S	2 ½	5	Fig.No.	Part No.
*E010	Socket bolt	8	a										
*E011	Spring washer	8	a										
E012	Non reverse relay	1	a			b						E-2	E3S622
E013	Conatctor S	1	a			b						E-8	E3S617
*E014	Limit switch assembly	1	a										
E015	Transformer	1	a			b						E-6	E3S616
*E016	Terminal block	2	a										
*E017	Machine screw with spring washer	2	a										
*E018	Machine screw with spring washer	1	a										
*E019	Socket bolt	4	a										
*E020	Spring washer	4	a										
*E021	Cable	1	a										
*E022	Cable	1	a										
E026	Eye bolt	1	a									A-48	E3S126
E027	Eye bolt packing	1	a									A-49	E3S127
E028	Snap ring	1	a			b						B-13	E3S233
E029	Load sheave	1	a			b			c			B-6	E3S228
E030	Gear #2 assembly	1	*a	b		c		d	e		B-16	E3S5223	
E031	Ball bearing	1	a			b						B-17	E3S225
E032	Ball bearing	1	a			b						B-14	E3S222
E033	Gear case A	1	a			b						A-51	E3S102
E034	Body	1	a			b						A-43	E3S101
E035	Oil seal	1	a			b						B-8	E3S232
E036	Ball bearing	1	a			b						B-9	E3S231
E037	Load gear	1	*a	b		c		d	e		B-12	E3S227	
E038	Split pin	1	a			b						D-14	E3S162
E039	Slotted nut	1	a			b						D-13	E3S161
E040	Chain guide B	1	a			b			c		C-3	E3S402	

Fig. No.	Part Name	Parts Per Hoist	Capacity									Interchangeability with standard parts	
			½-S	1-L	1-S	2-L	1 ½	3	2-S	2 ½	5	Fig.No.	Part No.
E041	Packing G	1	a				b					A-44	E3S124
E042	Set pin	6	a									A-20	E3S120
E043	Gear case packing B	1	a				b					A-53	E3S109
E044	Oil plug	2	a									A-28	E3S111
E045	Plug packing	2	a									A-27	E3S112
*E046	Controller cover	1	a				b						
*E047	Cable	1	a										
*E048	Controller box	1	a										
*E049	Packing	1	a										
*E050	Washer	1	a										
*E051	Cable holder	1	a										
*E052	Machine screw with spring washer	4	a										
*E053	Terminal box cover	1	a										
*E054	Terminal box	1	a										
*E055	Socket bolt	4	a										
*E056	Spring washer	4	a										
E057	Spring pin	1	a									C-19	E3S451
*E058	Lever pin coupling	1	a				b						
E059	Coupling pin	1	a				b					C-10	E3S408
E060	Chain guide A	1	a				b			c		C-4	E3S401
E061	Limit lever pin	1	a				b					C-8	(*) E3S406
E062	Limit lever assembly	1	a				b			c		C-13	E3S5405
E063	Frame G assembly	1	a				b					A-46	E3S5121
E064	Frame M assembly	1	a				b					A-41	E3S5122
E065	Top pin	1	a				b					D-15	E3S117
*E066	Socket bolt	6	a										
*E067	Spring washer	6	a										
E068	Ball bearing	1	a				b					B-5	E3S230

(\*) Up to 2-L ton, E3S5406 is used

Fig. No.	Part Name	Parts Per Hoist	Capacity									Interchangeability with standard parts	
			½-S	1-L	1-S	2-L	1 ½	3	2-S	2 ½	5	Fig.No.	Part No.
E069	Oil seal	1	a				b					B-7	E3S221
E071	Ball bearing	1	a									B-2	E3S205
E072	Snap ring	1	a									B-1	E3S209
E073	Pinion assembly	1	a				b					B-4	E3S1220
*E074	Snap ring	1	a				b						
*E075	Ball bearing	1	a				b						
*E076	Bracket	1	a				b						
*E077	Motor frame with stator	1	a				b						
E078	Coned-disc spring	1	a				b					A-17	E3S504
E079	Pull rotor	1	a				b					A-16	E3S503
E080	Brake spring	1	a				b					A-13	E3S214
E081	Thrust collar	1	a				b					A-15	E3S506
E082	Thrust disc	2	a				b					A-14	E3S505
E083	Brake drum assembly	1	a				b					A-12	E3S5212
*E084	Motor cover	1	a				b						
E085	Coned-disc spring M	4	a				b					A-61	E3S191
E086	Ball bearing	1	a				b					A-8	E3S202
E087	Snap ring	1	a				b					A-7	E3S203
E088	Lock washer	1	a				b					A-3	E3S218
E089	Nut	1	a				b					A-2	E3S217
*E090	Motor shaft with rotor	1	a				b						
*E091	Cover	1	a				b						
E092	Spacer	1	a				b					A-4	E3S216
E093	Collar M	1	a				b					A-60	E3S192
*E094	Socket bolt	6	a				b						
*E095	Spring washer	6	a										
*E096	Socket bolt	8	a										
*E097	Spring washer	8	a										

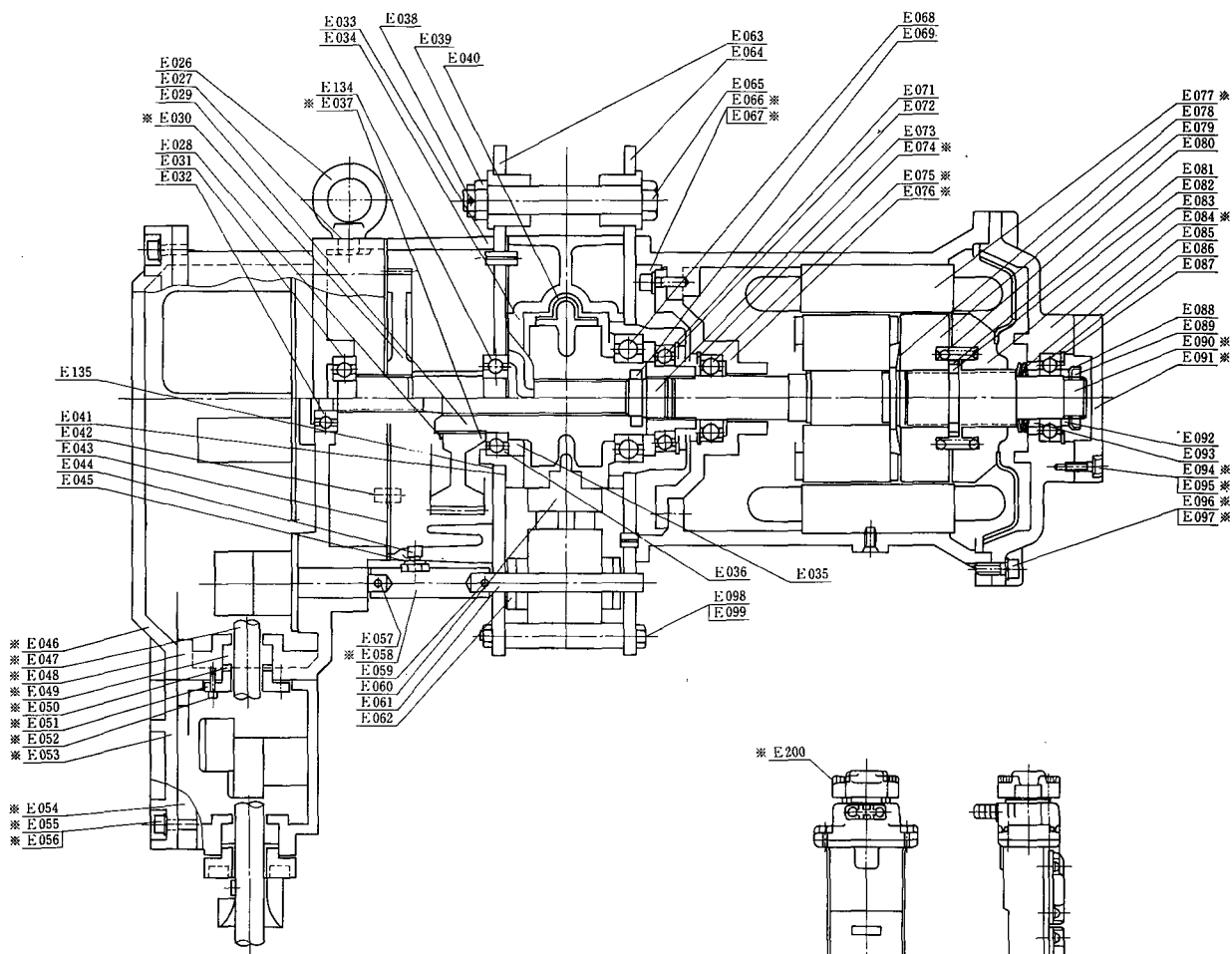
Fig. No.	Part Name	Parts Per Hoist	Capacity									Interchangeability with standard parts	
			½-S	1-L	1-S	2-L	1 ½	3	2-S	2 ½	5	Fig.No.	Part No.
E098	Bolt	2	a			b						C-1	E3S854
E099	U nut	2	a			b						C-5	E3S855
E114	Socket bolt	4	a			b						A-21	E3S157
*E115	Spring washer	4	a			b							
*E116	Socket bolt	4	a										
*E117	Spring washer	4	a										
*E118	Packing	1	a										
*E119	Washer	2	a										
*E120	Cable holder M	1	a										
*E121	Machine screw with spring washer	4	a										
*E122	Terminal cover M	1	a										
*E124	Socket bolt	4	a										
*E125	Spring washer	4	a										
*E126	Packing	3	a										
*E127	Washer	3	a										
*E128	Cable holder	3	a										
*E129	Machine screw with spring washer	4	a										
*E130	Cable clamp	3	a										
*E131	Socket bolt	12	a										
*E132	Spring washer	12	a										
*E133	Terminal box M	1	a										
E134	Ball bearing	1	a			b						B-15	E3S226
E135	Gear case packing A	1	a			b						A-50	E3S125
*E200	2 push button switch assembly	1	a										

Fig. No.	Part Name	Parts Per Trolley	Capacity				Interchangeability with standard parts	
			1 <sup>T</sup>	2 <sup>T</sup>	3 <sup>T</sup>	5 <sup>T</sup>	Fig.No.	Part No.
*M001	Machine screw with spring washer	4		a				
*M002	Packing	1		a				
*M003	Washer	1		a				
*M004	Cable holder C	1		a				
*M005	Cable	1		a				
*M006	Plate	1		a				
M007	Contactor	1		a			C-23	M3S520
M008	Machine screw with spring washer	4		a			C-19	M3S554
*M009	Switch box	1		a				
*M010	Terminal box S	1		a				
*M011	Machine screw with spring washer	2		a				
*M012	Plate	1		a				
*M013	Terminal plate	3		a				
*M014	Terminal box S lid	1		a				
*M015	Socket bolt	12		a				
*M016	Spring washer	12		a				
*M017	Switch box lid	1		a				
*M018	Lid	1		a				
*M019	Cable	1		a				
*M020	Cable	1		a				
*M021	Cable	1		a				
*M043	Socket bolt	4		a				
*M044	Spring washer	4		a				
*M045	Socket bolt	4		a				
*M046	Spring washer	4		a				
*M047	Spacer	2		a				
*M048	Side plate S assembly	1		a				
M049	Gear box A	1		a			A-30	M3S201

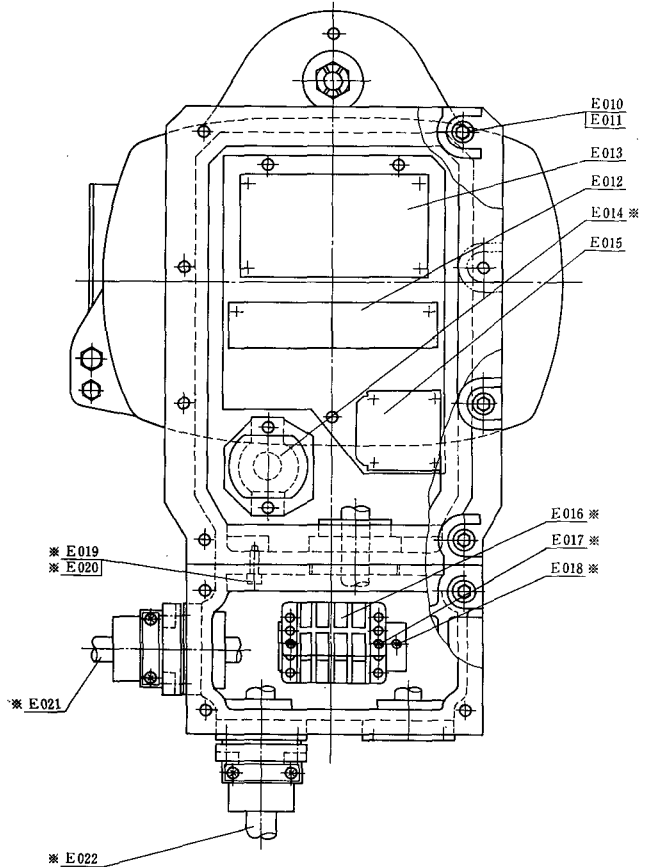
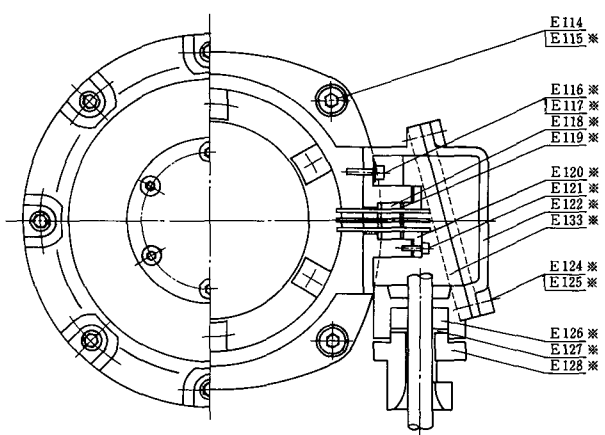
Fig. No.	Part Name	Parts Per Trolley	Capacity				Interchangeability with standard parts	
			1 <sup>T</sup>	2 <sup>T</sup>	3 <sup>T</sup>	5 <sup>T</sup>	Fig.No.	PartNo.
M050	Track wheel S assembly	2	a	b	c	d	A-47	M3S1102
M051	Washer	4	a	b	c	d	A-46	M3S104
M052	Snap ring	4	a	b	c	d	A-45	M3S153
M053	Side roller holder	4	a	b		c	A-50	M3S142
M054	Side roller	4	a	b		c	A-52	M3S141
M055	Roller pin	4	a	b		c	A-51	M3S143
M057	Socket bolt	8	a	b		c	A-55	M3S171
M058	Spring washer	8	a	b		c	A-54	M3S172
M059	Stopper plate	4	a	b		c	A-53	M3S144
M060	Adjusting spacer	1t 24 2~5 t 16	a	b	c	d	A-58	1t 24 2~5t 16
*M061	Suspension shaft	1	a	b	c	d		
M062	Shaft stopper pin	1	a	b	c	d	A-62	M3S161
M063	Slotted nut	1	a		b		A-59	M3S162
M064	Split pin	1	a		b		A-60	M3S163
M065	Track wheel G assembly	2	a	b	c	d	A-41	M3S1101
M066	Side plate G assembly	1	a	b	c	d	A-40	M3S5111
M067	Snap ring	1	a				A-34	M3S274
M068	Gear # 3	1	a	b		c	A-35	M3S213
M069	Gear box packing	1	a				A-25	M3S203
M070	Ball bearing	2	a				A-33	M3S273
M071	Gear # 2	1	a				A-27	M3S212
M072	Snap ring	1	a				A-26	M3S275
*M073	Gear box B	1	a					
M074	Socket bolt	4	a				A-18	M3S256
M075	Spring washer	4	a				A-19	M3S257
M076	Ball bearing	1	a				A-23	M3S272
*M077	Spacer	1	a					
*M078	Motor frame with stator	1	a		b			

Fig. No.	Part Name	Parts Per Trolley	Capacity				Interchangeability with standard parts	
			1 <sup>r</sup>	2 <sup>r</sup>	3 <sup>r</sup>	5 <sup>r</sup>	Fig.No.	Part No.
*M079	Socket bolt	6	a					
*M080	Spring washer	6	a					
M081	Bumper	1	a				A - 9	M3S305
M082	Brake spring	1	a				A - 8	M3S304
M083	Brake drum assembly	1	a				A - 7	M3S5302
M084	Ball bearing	1	a				A - 6	M3S271
*M085	Motor shaft with rotor	1	a		b			
*M086	Motor cover	1	a					
*M087	Socket bolt	4	a					
*M088	Spring washer	4	a					
*M089	Terminal box M	1	a					
*M090	Washer	2	a					
*M091	Packing	1	a					
*M092	Cable holder M	1	a					
*M093	Terminal cover M	1	a					
*M094	Machine screw with spring washer	4	a					
*M095	Packing	5	a					
*M096	Washer	5	a					
*M097	Cable holder	5	a					
*M098	Socket bolt	30	a					
*M099	Washer	30	a					
*M100	Cable clamp	5	a					
*M101	Machine screw with spring washer	10	a					
*M102	Push button cord	1	a					
M103	Shaft stopper	1	a	b	c	d	A - 64	M3S164
M104	Split pin	1	a		b		A - 63	M3S165
*M200	4 Push button switch assembly	1	a					

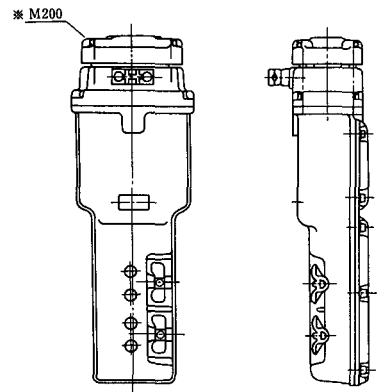
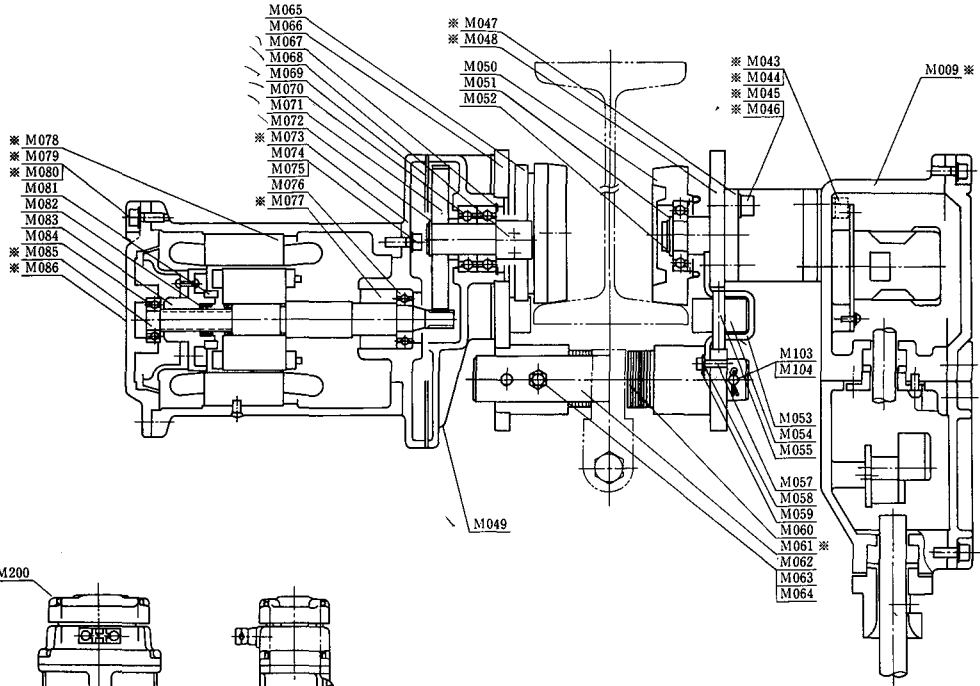




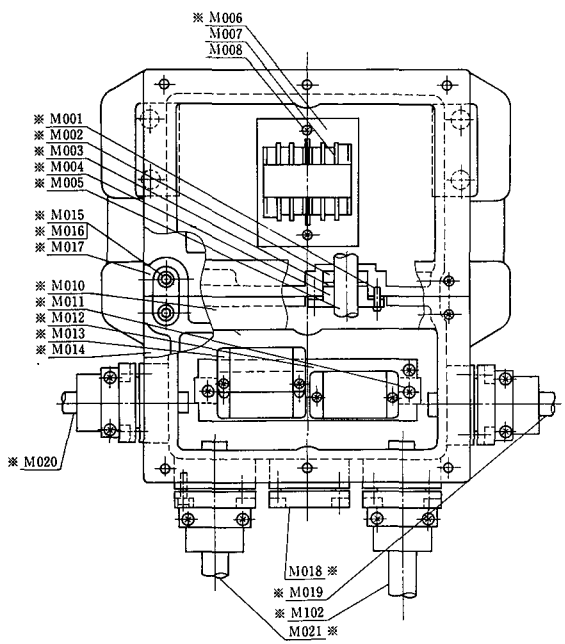
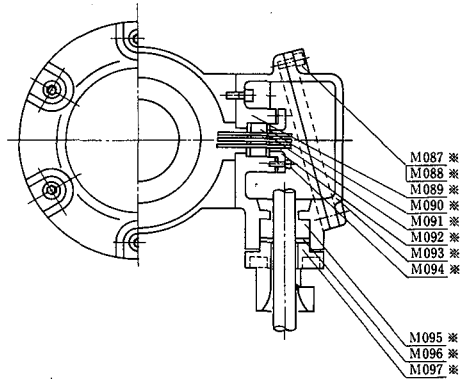
**PUSH BUTTON SWITCH**



**ELECTRIC CHAIN HOIST**



**PUSH BUTTON SWITCH**



**MOTORIZED TROLLEY**

**KITO**

URL. <http://www.kito.co.jp>